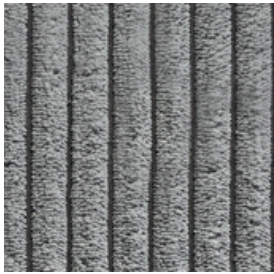
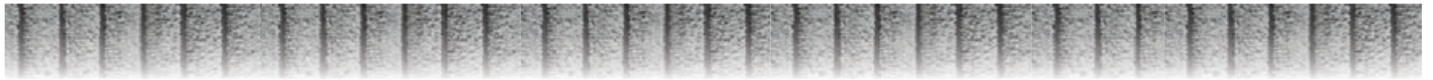
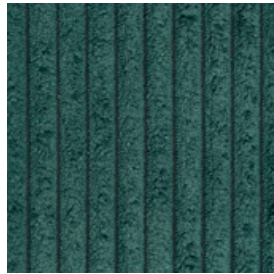


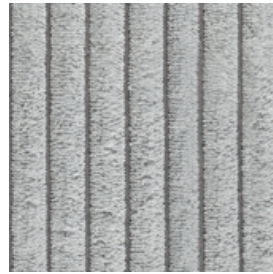
STOFF CORD - PREISGRUPPE 6 (PG 6)



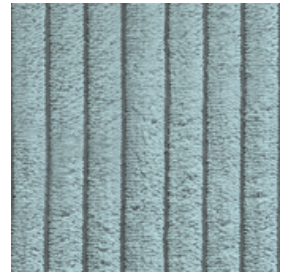
CORD - DARK GREY



CORD - GREEN



CORD - GREY



CORD - LIGHT BLUE



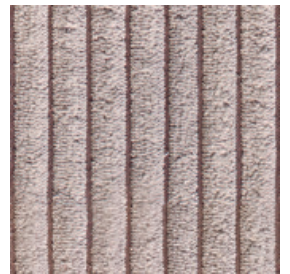
CORD - LIGHT GREY



CORD - NATURE



CORD - PETROL



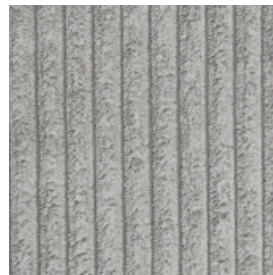
CORD - ROSA



CORD - RUSTY



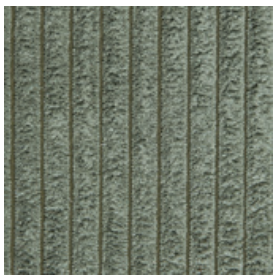
CORD - SNOW



CORD - STONE



CORD - TAUPE



CORD - TURTLE



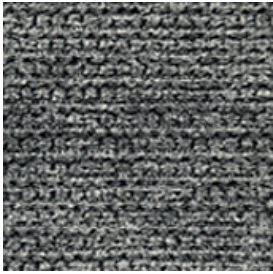
MATERIAL-

12% POLYACRYL, 88% POLYESTER

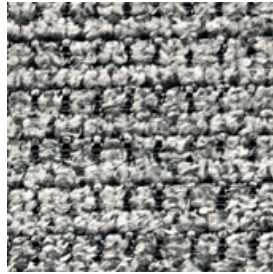
20.000 SCHEUERTOUREN, LICHTECHTHEIT 4, PILLING 4-5

DIE FARBEN DER ABBILDUNGEN KÖNNEN VON DEN ORIGINALFARBEN DER STOFFE ABWEICHEN

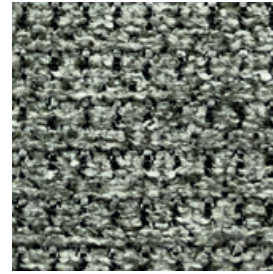
STOFF FAMOUS - PREISGRUPPE 6 (PG 6)



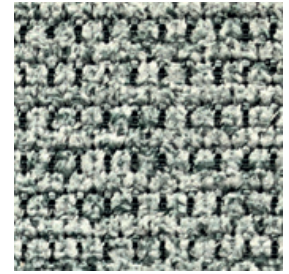
FAMOUS -
ANTHRAZIT



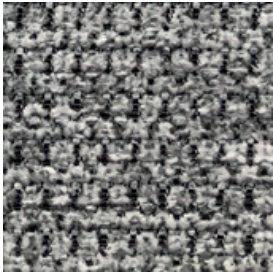
FAMOUS -
GREY



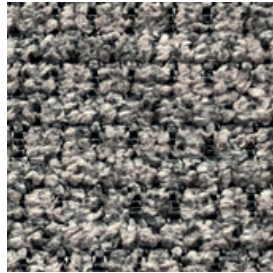
FAMOUS -
OLIV



FAMOUS -
SAGE



FAMOUS -
SILVER



FAMOUS -
STONE

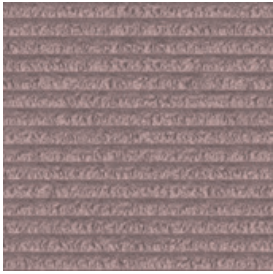


MATERIAL -
100% POLYESTER

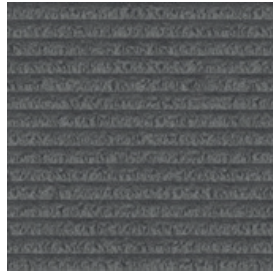
45.000 SCHEUERTOUREN, LICHTECHTHEIT 4, PILLING 4-5

DIE FARBEN DER ABBILDUNGEN KÖNNEN VON DEN ORIGINALFARBEN DER STOFFE ABWEICHEN

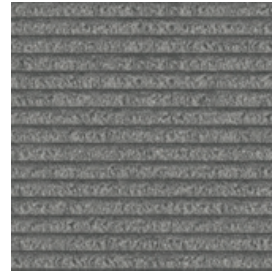
STOFF FEINCORD - PREISGRUPPE 6 (PG 6)



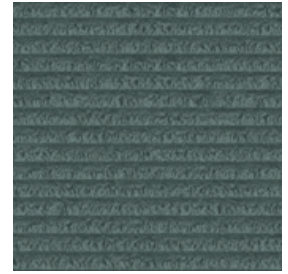
FEINCORD -
ALTROSA



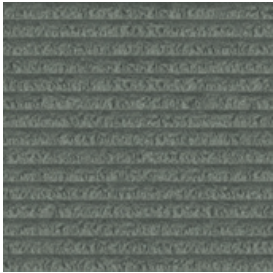
FEINCORD -
ANTHAZIT



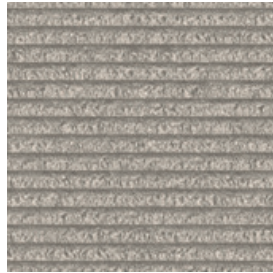
FEINCORD -
GRAU



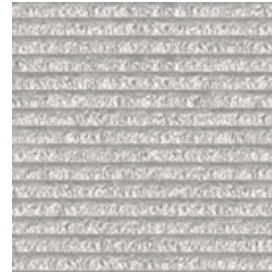
FEINCORD -
GRÜN



FEINCORD -
OLIV



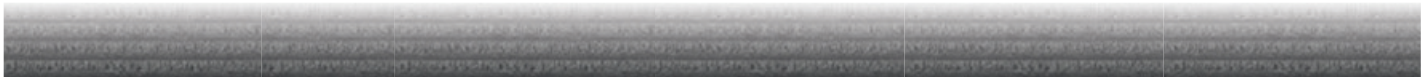
FEINCORD -
SAND



FEINCORD -
SILBER



FEINCORD -
WEISS



MATERIAL -
95% POLYESTER, 5% NYLON

50.000 SCHEUERTOUREN, LICHTECHTHEIT 4-5, PILLING 4-5

DIE FARBEN DER ABBILDUNGEN KÖNNEN VON DEN ORIGINALFARBEN DER STOFFE ABWEICHEN

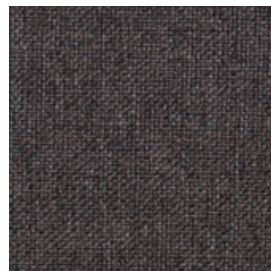
STOFF FLORIDA - PREISGRUPPE 6 (PG 6)



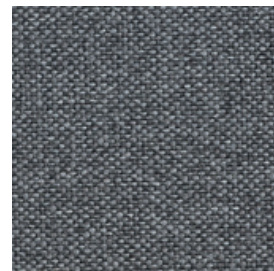
FLORIDA -
ANTHRAZID



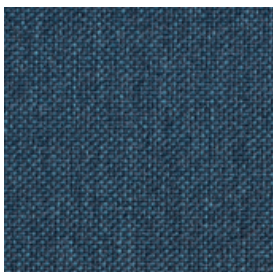
FLORIDA -
BEIGE



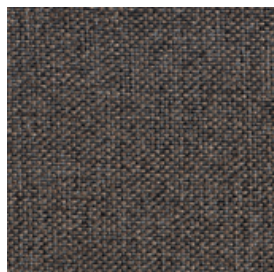
FLORIDA -
CHOCOLATE



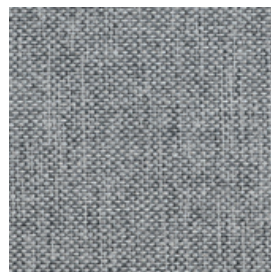
FLORIDA -
DARK GREY



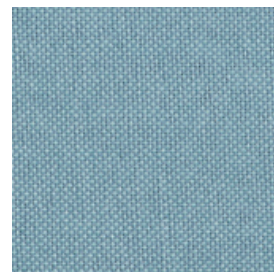
FLORIDA -
DEEP OCEAN



FLORIDA -
ESPRESSO



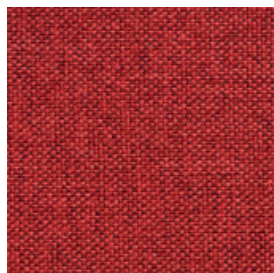
FLORIDA -
GREY



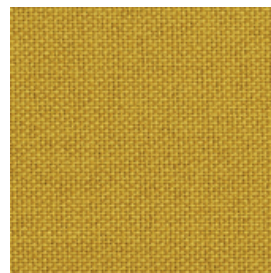
FLORIDA -
LIGHT BLUE



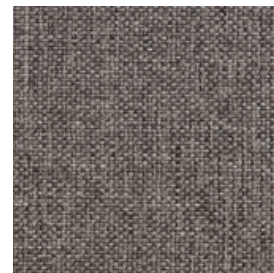
FLORIDA -
LIGHT GREY



FLORIDA -
ROT



FLORIDA -
SAPHRAN



FLORIDA -
STONE

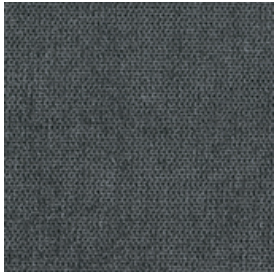


MATERIAL -
100% POLYESTER

32.000 SCHEUERTOUREN, LICHTECHTHEIT 5, PILLING 4-5

DIE FARBEN DER ABBILDUNGEN KÖNNEN VON DEN ORIGINALFARBEN DER STOFFE ABWEICHEN

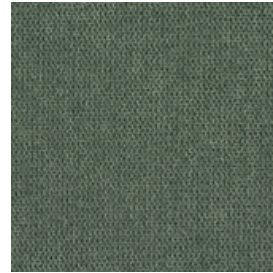
STOFF FREE - PREISGRUPPE 6 (PG 6)



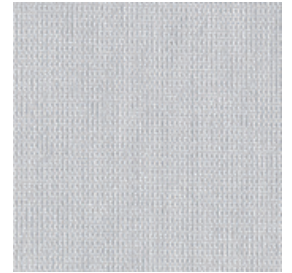
FREE - ANTHRAZIT



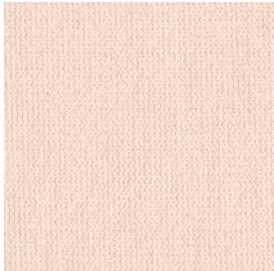
FREE - NATURE



FREE - OLIV



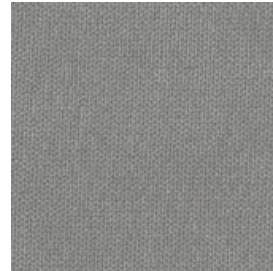
FREE - PLATIN



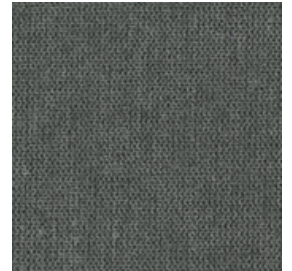
FREE - ROSA



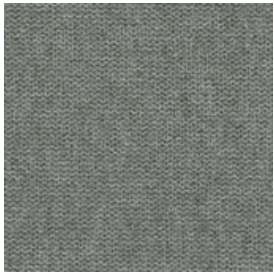
FREE - SAGE



FREE - SILVER



FREE - STEEL



FREE - STONE



FREE - VANILLE



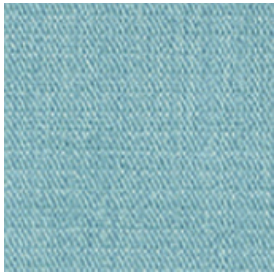
MATERIAL -

85% POLYESTER, 15% NYLON

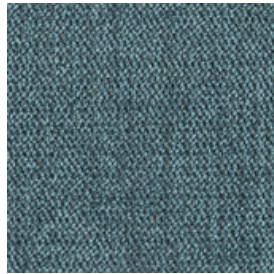
40.000 SCHEUERTOUREN, LICHTECHTHEIT 4-5, PILLING 4-5

DIE FARBEN DER ABBILDUNGEN KÖNNEN VON DEN ORIGINALFARBEN DER STOFFE ABWEICHEN

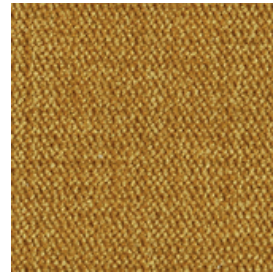
STOFF MATRIX - PREISGRUPPE 6 (PG 6)



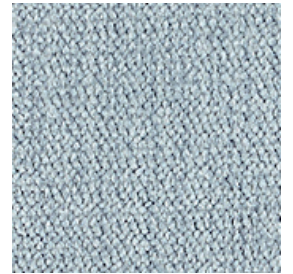
MATRIX -
AQUA



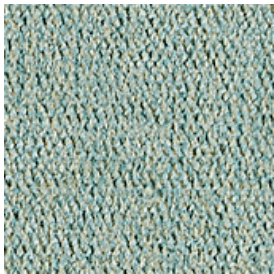
MATRIX -
AZUR



MATRIX -
CURRY



MATRIX -
LIGHT BLUE



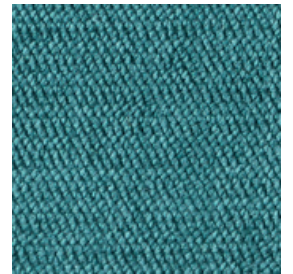
MATRIX -
MINT



MATRIX -
NATURE



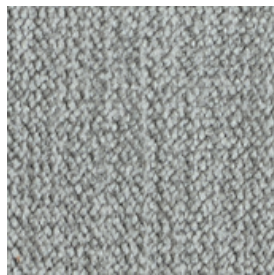
MATRIX -
OLIV



MATRIX -
PETROL



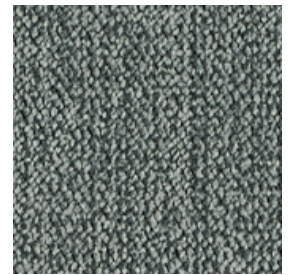
MATRIX -
ROSA



MATRIX -
SILVER



MATRIX -
STEEL



MATRIX -
STONE

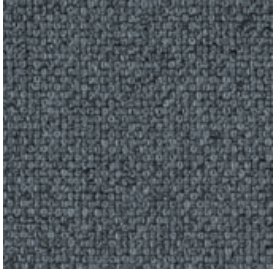


MATERIAL -
100% POLYESTER

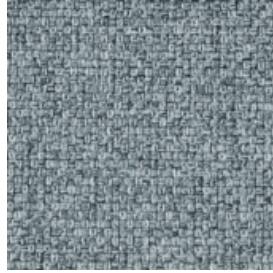
35.000 SCHEUERTOUREN, LICHTECHTHEIT 4-5, PILLING 5

DIE FARBEN DER ABBILDUNGEN KÖNNEN VON DEN ORIGINALFARBEN DER STOFFE ABWEICHEN

STOFF MONO - PREISGRUPPE 6 (PG 6)



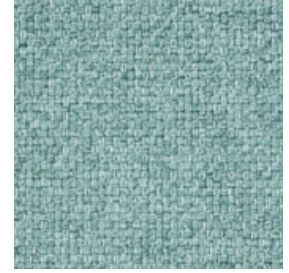
MONO - ANTHRAZIT



MONO - GREY



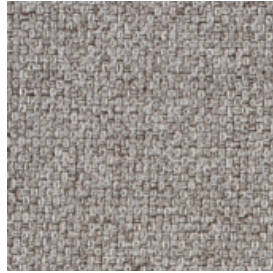
MONO - LIGHT GREY



MONO - MINT



MONO - NATURE



MONO - TAUPE



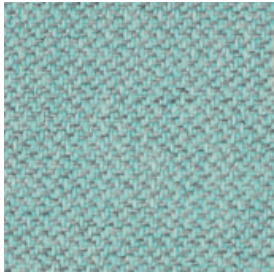
MATERIAL -

100% POLYESTER

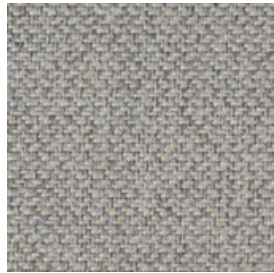
100.000 SCHEUERTOUREN, LICHTECHTHEIT 4-5, PILLING 4

DIE FARBEN DER ABBILDUNGEN KÖNNEN VON DEN ORIGINALFARBEN DER STOFFE ABWEICHEN

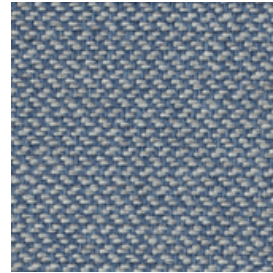
STOFF TWICE - PREISGRUPPE 6 (PG 6)



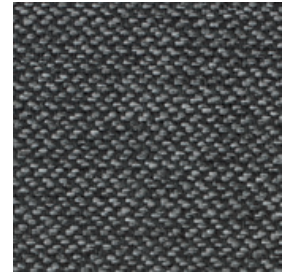
TWICE - AQUA



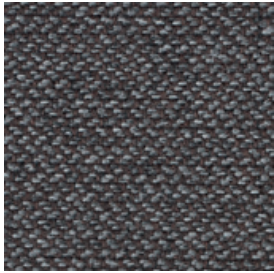
TWICE - BEIGE



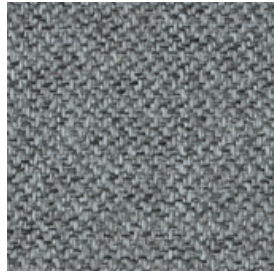
TWICE - BLUE



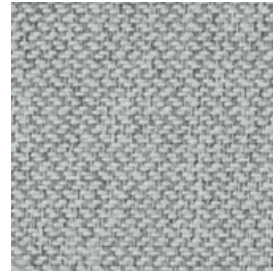
TWICE - DARK GREY



TWICE - ESPRESSO



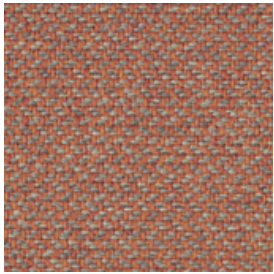
TWICE - GREY



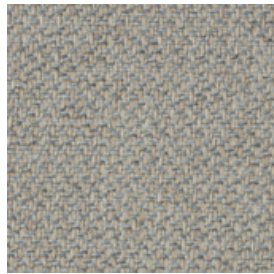
TWICE - LIGHT GREY



TWICE - NATURE



TWICE - RUSTY



TWICE - SAND



MATERIAL -
100% POLYESTER

50.000 SCHEUERTOUREN, LICHTECHTHEIT 5, PILLING 4-5

DIE FARBEN DER ABBILDUNGEN KÖNNEN VON DEN ORIGINALFARBEN DER STOFFE ABWEICHEN