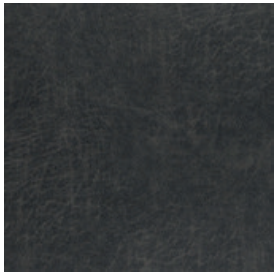


STOFF BISON - PREISGRUPPE 10 (PG 10)



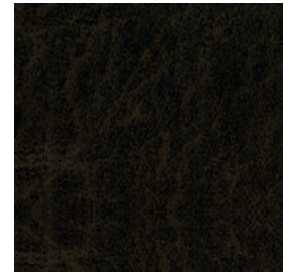
BISON - ANTHRAZIT



BISON - BRANDY



BISON - CHOCOLATE



BISON - ESPRESSO



BISON - GREY



BISON - MACCHIATO



BISON - NATURE



BISON - OLIV



MATERIAL -

96% POLYESTER, 4% POLYURETHAN

30.000 SCHEUERTOUREN, LICHTECHTHEIT 3-4, PILLING 4

DIE FARBEN DER ABBILDUNGEN KÖNNEN VON DEN ORIGINALFARBEN DER STOFFE ABWEICHEN

STOFF COSMOPOLITAN - PREISGRUPPE 10 (PG 10)



COSMOPOLITAN -
ARMY



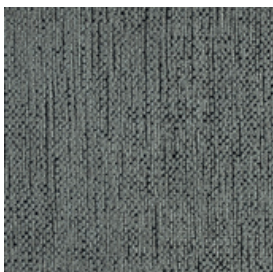
COSMOPOLITAN -
CHAMPAGNER



COSMOPOLITAN -
ESPRESSO



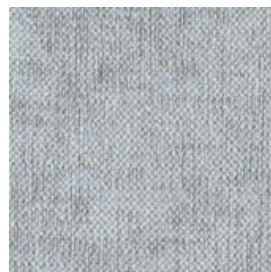
COSMOPOLITAN -
FANGO



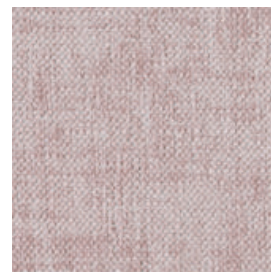
COSMOPOLITAN -
GRAPHITE



COSMOPOLITAN -
LIGHT BLUE



COSMOPOLITAN -
LIGHT GREY



COSMOPOLITAN -
ROSA



COSMOPOLITAN -
SILVER



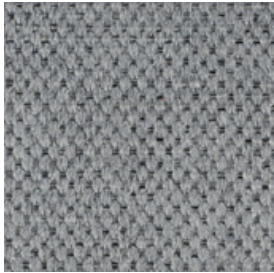
MATERIAL -

59,7% POLYESTER, 34,4% POLYACRYL, 5,9% VISKOSE

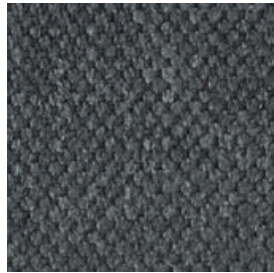
35.000 SCHEUERTOUREN, LICHTECHTHEIT 5, PILLING 4-5

DIE FARBEN DER ABBILDUNGEN KÖNNEN VON DEN ORIGINALFARBEN DER STOFFE ABWEICHEN

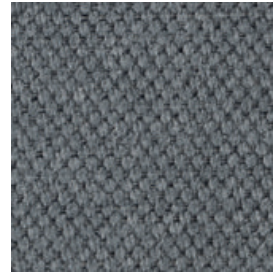
STOFF STYLE - PREISGRUPPE 10 (PG 10)



STYLE - GREY



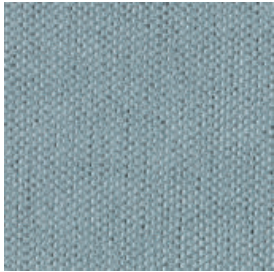
STYLE - ANTHRAZIT



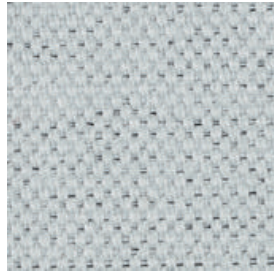
STYLE - DARK GREY



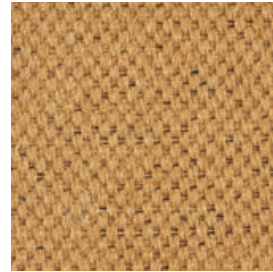
STYLE - ESPRESSO



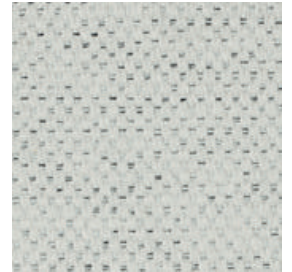
STYLE - LIGHT BLUE



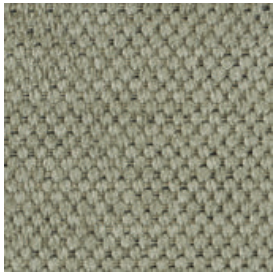
STYLE - LIGHT GREY



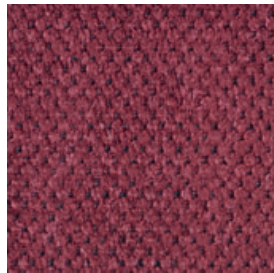
STYLE - MAIS



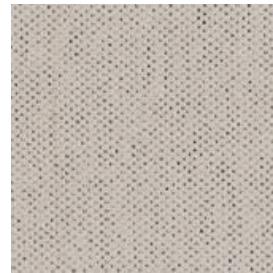
STYLE - NATURE



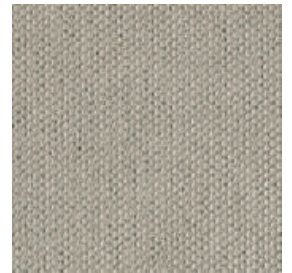
STYLE - OLIV



STYLE - RED



STYLE - SAND



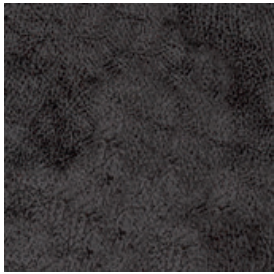
STYLE - SILVER



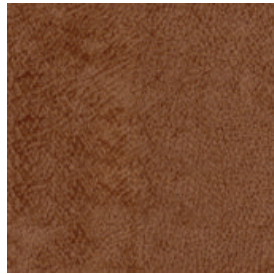
MATERIAL-
98% POLYESTER, 88% NYLON
50.000 SCHEUERTOUREN, LICHTECHTHEIT 5, PILLING 4

DIE FARBEN DER ABBILDUNGEN KÖNNEN VON DEN ORIGINALFARBEN DER STOFFE ABWEICHEN

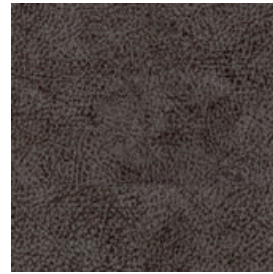
STOFF TEXAS - PREISGRUPPE 10 (PG 10)



TEXAS - ANTHRAZIT



TEXAS - COGNAC



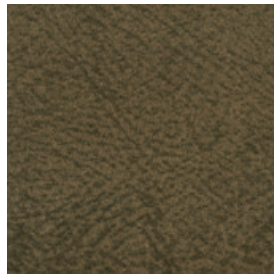
TEXAS - GREY



TEXAS - MACCHIATO



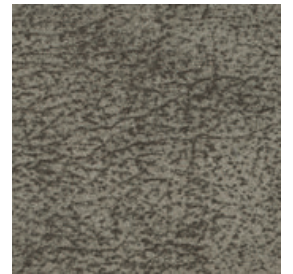
TEXAS - NATURE



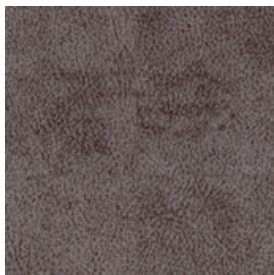
TEXAS - OLIV



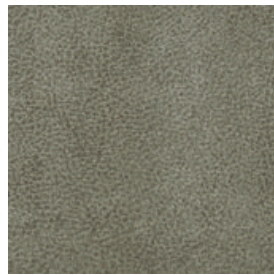
TEXAS - SILVER



TEXAS - STONE



TEXAS - TAUPE



TEXAS - THYME

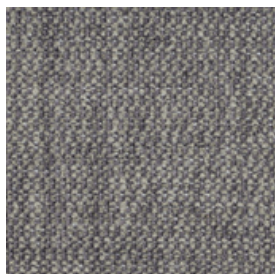


MATERIAL -
100% POLYESTER

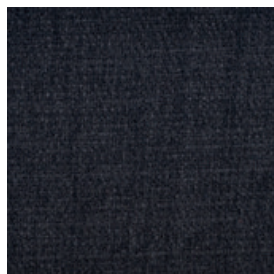
20.000 SCHEUERTOUREN, LICHTECHTHEIT 4, PILLING 4-5

DIE FARBEN DER ABBILDUNGEN KÖNNEN VON DEN ORIGINALFARBEN DER STOFFE ABWEICHEN

STOFF TREND - PREISGRUPPE 10 (PG 10)



TREND - PURPLE
GREY



TREND - ANTHRAZIT



TREND - BERRY



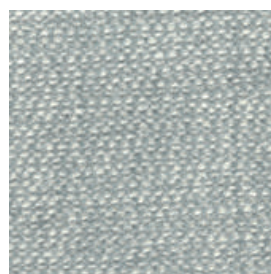
TREND - CHESTNUT



TREND - COFFEE



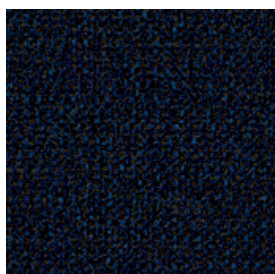
TREND - GREY



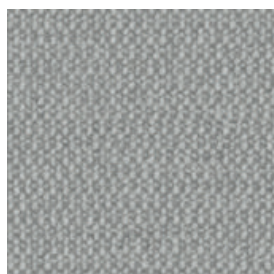
TREND - ICE BLUE



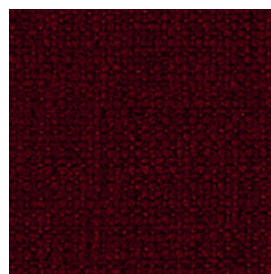
TREND - LIGHT
BLUE



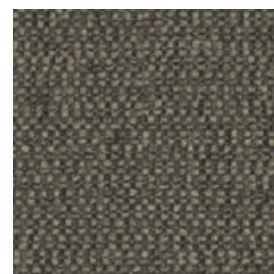
TREND - NAVY



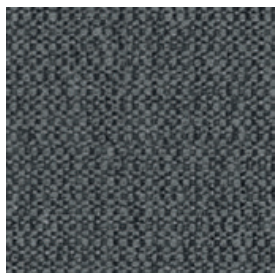
TREND - PLATIN



TREND - RED



TREND - SAND



TREND - SILVER



TREND - SNOW



TREND - STONE



MATERIAL -
16% BAUMWOLLE, 79% POLYESTER, 5% POLYACRYL
40.000 SCHEUERTOUREN, LICHTECHTHEIT 5, PILLING 4

DIE FARBEN DER ABBILDUNGEN KÖNNEN VON DEN ORIGINALFARBEN DER STOFFE ABWEICHEN